



The Crakker™ Logic/Timing Analyzer

LOGIC BEACH Inc.

CRAKker™ WINDOWS SOFTWARE V3.0

OVERVIEW

The Crakker Communications Software is the program used to communicate and program the Crakker Control System logic/timing analyzer as well as to review and evaluate the recorded data. The latest version operates under the following Windows platforms: Win95, 98, NT, 2000, XP. Version 3.0 is extremely easy to use and program. It is very similar to the prior program making the transition to the Windows based program effortless. The new Windows program will work with V2.0 Crakker firmware.

Communications and Data Analysis

Figure 1 illustrates the data analysis capability of Version 3.0. **New** features include user-defined colors for each channel and hide/move channel capabilities. A **new** file position bar indicates the amount of data being viewed and the viewed data location within the entire file and trigger location. Standard features include zoom in/out, delta-time, real-time and cursor time from keyboard or screen commands. Enhanced Windows printing includes printing entire file or just selection. V3.0 allows for exporting to CSV (Excel) files.

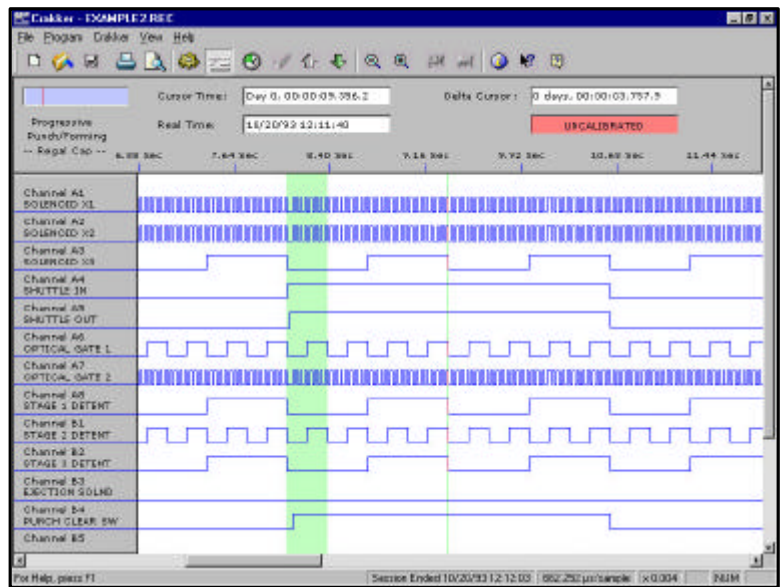


Figure 1 - Data Analysis

Programming

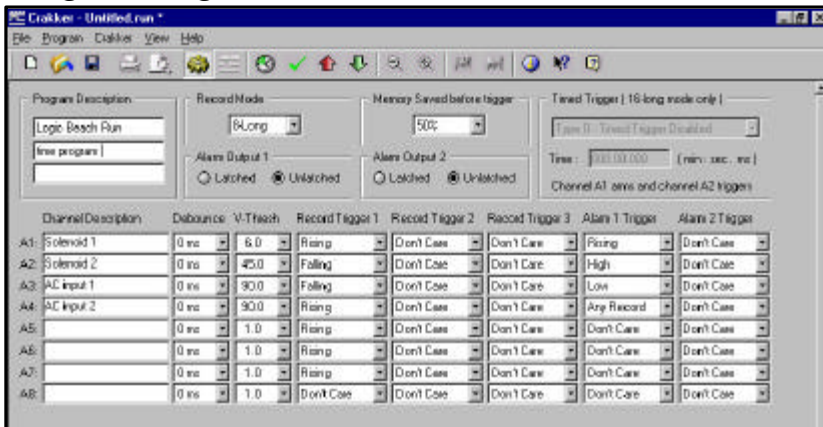


Figure 2 - Programming

The new programming screen is easier and more intuitive to use than ever. Simply select the number of inputs, 8 or 16, and if you wish to use alarm triggers. Voltage thresholds, triggers and alarms and are easily set from selections in drop-down boxes. Just select the parameters for your application, save the program, upload it and get to work. The Crakker will locate that intermittent or first-out in no time. There are also two controllable relay outputs on the Crakker for visible or audible alarming or emergency shutdown interface.

V3.0 for CK-2 only. CK-1 owners must upgrade to CK-2. Features and specifications subject to change.

LOGIC BEACH INCORPORATED

8363 - 6F Center Drive La Mesa, CA 91942 Tel: 619-698-3300 Fax: 619-469-8604 www.logicbeach.com