



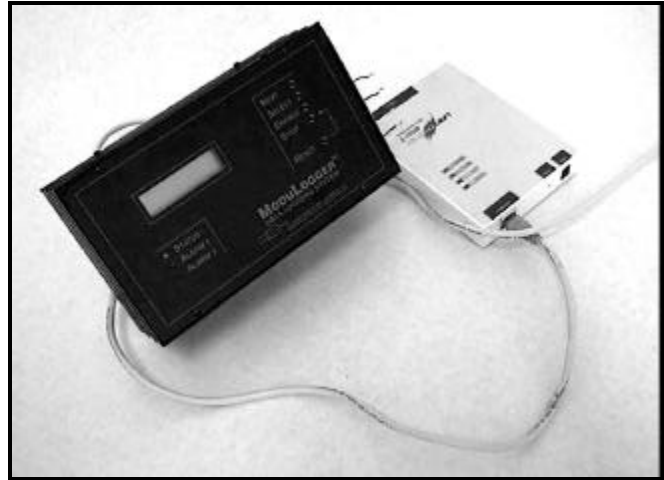
LOGIC BEACH Inc.

Dedicated Network Connected Dataloggers

INTERNET/ETHERNET COMMUNICATIONS INTERFACE

Features

- Communicate to data loggers located anywhere in the world.
- Simple hardware configuration and connection to existing dedicated networks, internet - intranet.
- Compatibility with all Logic Beach data loggers.
- Full HyperWare™ command set is available simply and transparently.
- HyperWare Automation Program (HAP) can automatically poll a mix of loggers connected via TCP/IP, modem, RS-232, etc.
- Allows unlimited serial data distance runs using standard Ethernet drivers and hubs



OVERVIEW

Standard Internet/Ethernet connectivity is now featured in the current offering of serial communication options for interrogation and programming of Logic Beach data loggers. With the simple installation of the Network Interface Adapter and HyperWare Ver 4.XX (or HAP 1.2) software, Logic Beach Data loggers can now be addressed as a node on an existing LAN, WAN or over the internet.

With Ethernet connectivity, loggers can be located at remote nodes throughout a production facility, in the lab, or even at other facilities with communications handled from any PC with network/Internet access using HyperWare or HAP (HyperWare Automation Program).

NETWORK IMPLEMENTATION

Network data logging communication is implemented by installation and connection of a Network Interface Adapter. The adapter is connected from a dedicated network connection, DSL or cable modem, 10Base-T or 100Base-T Ethernet node to the standard serial port provided on the HyperLogger™, ModuLogger™, and ModuLogger™ "Mini" portable data logging systems.

The Network Interface Adapter is then programmed with a unique TCP/IP address. The address is entered into the HyperWare and/or HAP Ethernet directory and the connection is ready. The TCP/IP address allows the data logger to be uniquely identified from anywhere in the world with a connection to the Internet. Additional device setup may be necessary depending upon the network and firewalls.

Network Interface Adapters are available with 1 to 16 serial ports per box allowing for up to 16 loggers to be on-line at a single TCP/IP address. An unlimited number of loggers can be configured on a network.

HYPERWARE™ IMPLEMENTATION

HyperWare™ is the standard software application used in conjunction with Logic Beach portable and remote site data logging instruments. HyperWare provides serial communication with the loggers, programming of the logger, real-time trending, data plotting and data post-processing (see separate data sheet).

Establishing a connection with an Network connected logger is simply a matter of opening the *Serial Communication Dialog* within HyperWare then adding a Connection Name and TCP/IP address for the Ethernet connected logger. When *Connect* is selected, a transparent connection is established providing the same serial connectivity offered by other standard serial connection means (modem, RS-232, cell phone, RF link, etc.).

HAP IMPLEMENTATION

HyperWare™ Automation Program (HAP) is a stand-alone application that automates the interrogation functions performed during the use of field located data loggers. HAP can be configured to automatically connect to a logger, then perform data downloads, memory clears, downloaded data file conversion, posting of Alarm messages, and even the generation of User customized reports through Microsoft™ Excel macros. (See separate HAP data sheet).

HAP now supports interrogation of Ethernet connected loggers. HAP can interrogate a full mix of logger models at various sites via modem, RS-232, cell phone and dedicated network connection.

LOGIC BEACH INCORPORATED

8363 - 6F Center Drive La Mesa, CA 91942

Tel: 619-698-3300

Fax: 619-469-8604

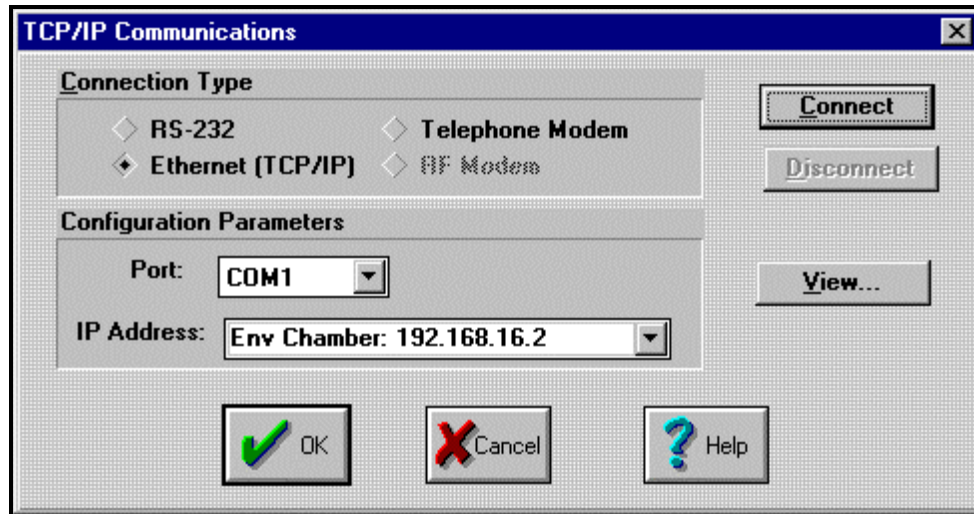
www.logicbeach.com



Dedicated Network Connected Dataloggers

LOGIC BEACH Inc.

Configuration of a Network connected logger is done similarly to any of the other type of serial connections. When building a HAP Site File for the Ethernet connected logger, an IP address and Name is assigned within the HAP Site Communication window.



Simple Ethernet Configuration within HyperWare™

SYSTEM SPECS

Data Logger Compatibility: Logic Beach HyperLogger™, ModuLogger™, or ModuLogger™ "Mini" running Firmware Version 4.x or later.

Network Compatibility: Ethernet version 2, 10/100Base-T. System uses TCP/IP addressing. Windows 95, 98 and NT.

Data Logger Software: HyperWare™ 4.1 or later, HAP 1.2 or later.

COMPONENT PRICING

Ordering Information: Specify a Network Interface Adapter (with desired number of logger connection ports) and a Serial Cable Adapter Kit which provides the cabling and adapter necessary to connect between the logger serial port and the Network Interface Adapter port.

Pricing: Each Network Interface Adapter is configured with a single TCP/IP address however, one or multiple loggers can be connected to single or multi-port Adapter Boxes.

LBI-MSS101 (1 logger port, 10/100 BaseT)	\$275
LBI-ETS4P (4 logger ports, 10BaseT)	\$1195
LBI-ETS8P (8 logger ports, 10BaseT)	\$1495
LBI-ETS16P (16 logger ports, 10BaseT)	\$1895
LBI-ETS16PR (16 logger ports, 10 / 100 MHz standard / rack-mount of system)	\$2195

Serial Cable / Adapters Kit: Required for connecting logger serial port to Network Interface Adapter port. Contains one CAR-4 cable and RJDB-25H adapter.

Longer serial cables can be provided by Logic Beach allowing loggers to be located up to 50' from the Interface Adapter port (depending on electrical noise in the logger / cable path environment).

SCAK-1	\$36
SCAK-1-custom length	\$36 (plus 0.50 per foot additional cable length)

Logger / HyperWare Upgrade to 4.0: \$180
(includes HyperWare™ and Firmware upgrade, manual, etc.)

LOGIC BEACH INCORPORATED

8363 - 6F Center Drive La Mesa, CA 91942

Tel: 619-698-3300

Fax: 619-469-8604

www.logicbeach.com