



**LOGIC BEACH Inc.**

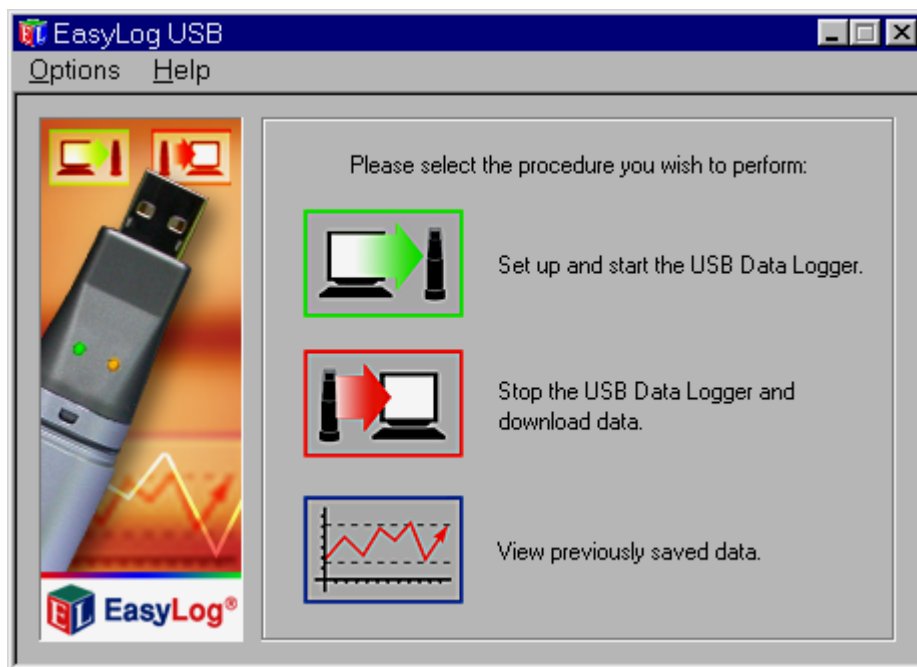
*"The Authority in Unrestricted Data Logging"*

**EL-USB Software**

## EL-USB CONTROL SOFTWARE

The software to operate and program the EL-USB data loggers from Logic Beach is simple and straightforward. The following steps show the major functional areas of the software for programming, downloading data, and reviewing data files.

1. Connect data logger to USB port.
2. Start EL-USB program. The first screen presented is shown on the right.



3. To check status on and query data logger for current status select Options/Current status from the menu. Help brings us individual help files for each data logger.



**LOGIC BEACH INCORPORATED**

8363 - 6F Center Drive La Mesa, CA 91942 | Tel: 619-698-3300 | Fax: 619-469-8604 | [www.logicbeach.com](http://www.logicbeach.com)

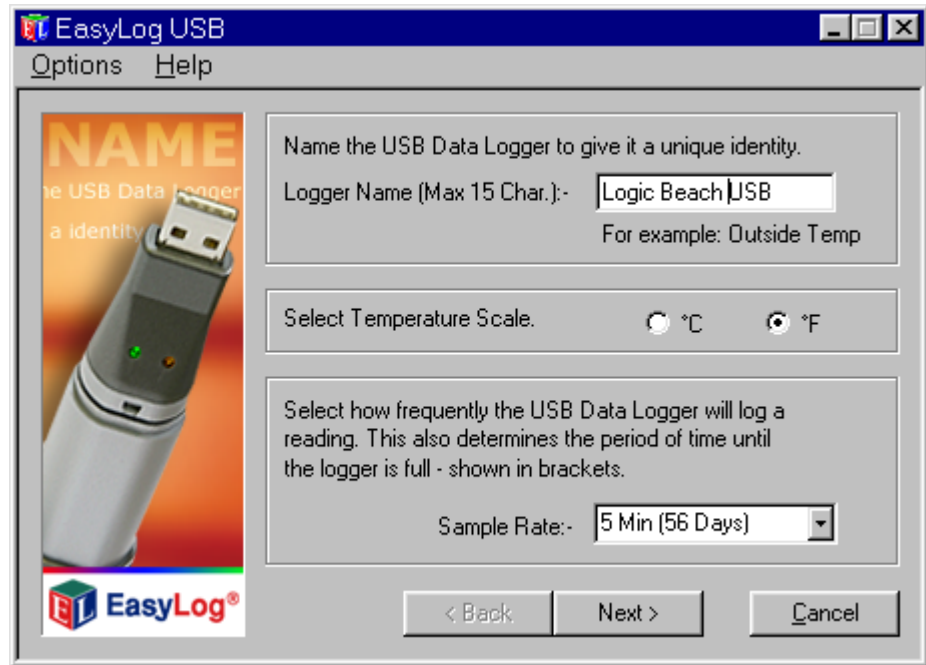


**LOGIC BEACH Inc.**

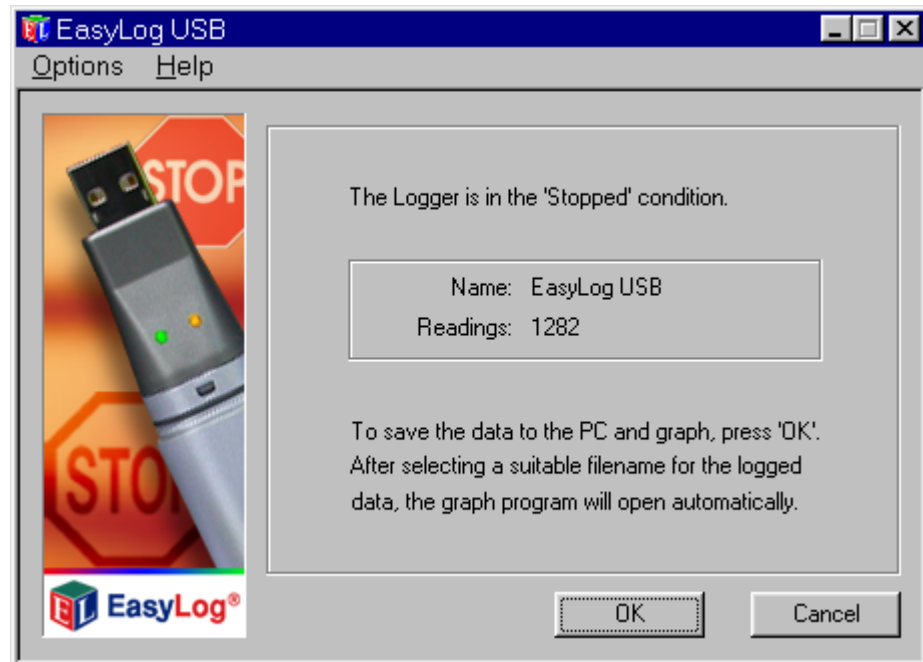
## EL-USB Software

4. Programming and set up is accomplished with a few steps that walk you through logger name, sample rate selection, alarm values, and start/stop times. The EL-USB-3 and EL-USB-4 allow for scaling of the voltage or milliAmps to engineering units.

Sample rates vary from 1x second to 1 per 12 hours depending upon model.



5. To download data choose "Stop the USB logger and download the data. This screen appears and you are then prompted for a file name. Data is saved as an ASCII text file so you can view the data with a text editor or a spreadsheet program.



**LOGIC BEACH INCORPORATED**

8363 - 6F Center Drive La Mesa, CA 91942 | Tel: 619-698-3300 | Fax: 619-469-8604 | [www.logicbeach.com](http://www.logicbeach.com)



**LOGIC BEACH Inc.**

**EL-USB Software**

6. Sample data file text of downloaded data from EL-USB-2 temperature and humidity data logger. This is a data file using a sample rate of 5 minutes. Temperature and humidity are recorded from sensors and dew point is a calculated field.

EasyLog USB,Time,Fahrenheit(°F),Humidity(%rh),dew point t(°F),Serial Number

1,09/03/2006 11:00:00,72.0,44.5,49.2,000003147

2,09/03/2006 11:05:00,73.0,43.0,49.2

3,09/03/2006 11:10:00,72.0,43.0,48.3

4,09/03/2006 11:15:00,72.0,43.5,48.6

5,09/03/2006 11:20:00,72.0,44.0,48.9

6,09/03/2006 11:25:00,72.0,44.0,48.9

7,09/03/2006 11:30:00,72.0,44.0,48.9

8,09/03/2006 11:35:00,72.0,44.0,48.9

9,09/03/2006 11:40:00,72.0,44.0,48.9

10,09/03/2006 11:45:00,72.0,44.0,48.9

11,09/03/2006 11:50:00,72.0,44.0,48.9

12,09/03/2006 11:55:00,73.0,43.5,49.5

13,09/03/2006 12:00:00,73.0,44.0,49.8

14,09/03/2006 12:05:00,73.0,44.0,49.8

15,09/03/2006 12:10:00,73.0,43.0,49.2

16,09/03/2006 12:15:00,74.0,43.0,50.1

17,09/03/2006 12:20:00,74.0,43.0,50.1

18,09/03/2006 12:25:00,74.0,42.5,49.8

19,09/03/2006 12:30:00,74.0,43.0,50.1

20,09/03/2006 12:35:00,74.0,43.0,50.1

21,09/03/2006 12:40:00,74.0,43.0,50.1

22,09/03/2006 12:45:00,74.0,43.0,50.1

23,09/03/2006 12:50:00,74.0,43.0,50.1

24,09/03/2006 12:55:00,74.0,43.0,50.1

25,09/03/2006 13:00:00,74.0,42.5,49.8

26,09/03/2006 13:05:00,74.0,42.5,49.8

27,09/03/2006 13:10:00,74.0,42.5,49.8

28,09/03/2006 13:15:00,74.0,42.5,49.8

29,09/03/2006 13:20:00,74.0,42.5,49.8

30,09/03/2006 13:25:00,74.0,42.5,49.8

31,09/03/2006 13:30:00,74.0,42.5,49.8

32,09/03/2006 13:35:00,75.0,42.5,50.7

33,09/03/2006 13:40:00,75.0,42.5,50.7

34,09/03/2006 13:45:00,75.0,43.0,51.0

35,09/03/2006 13:50:00,75.0,42.5,50.7

**LOGIC BEACH INCORPORATED**

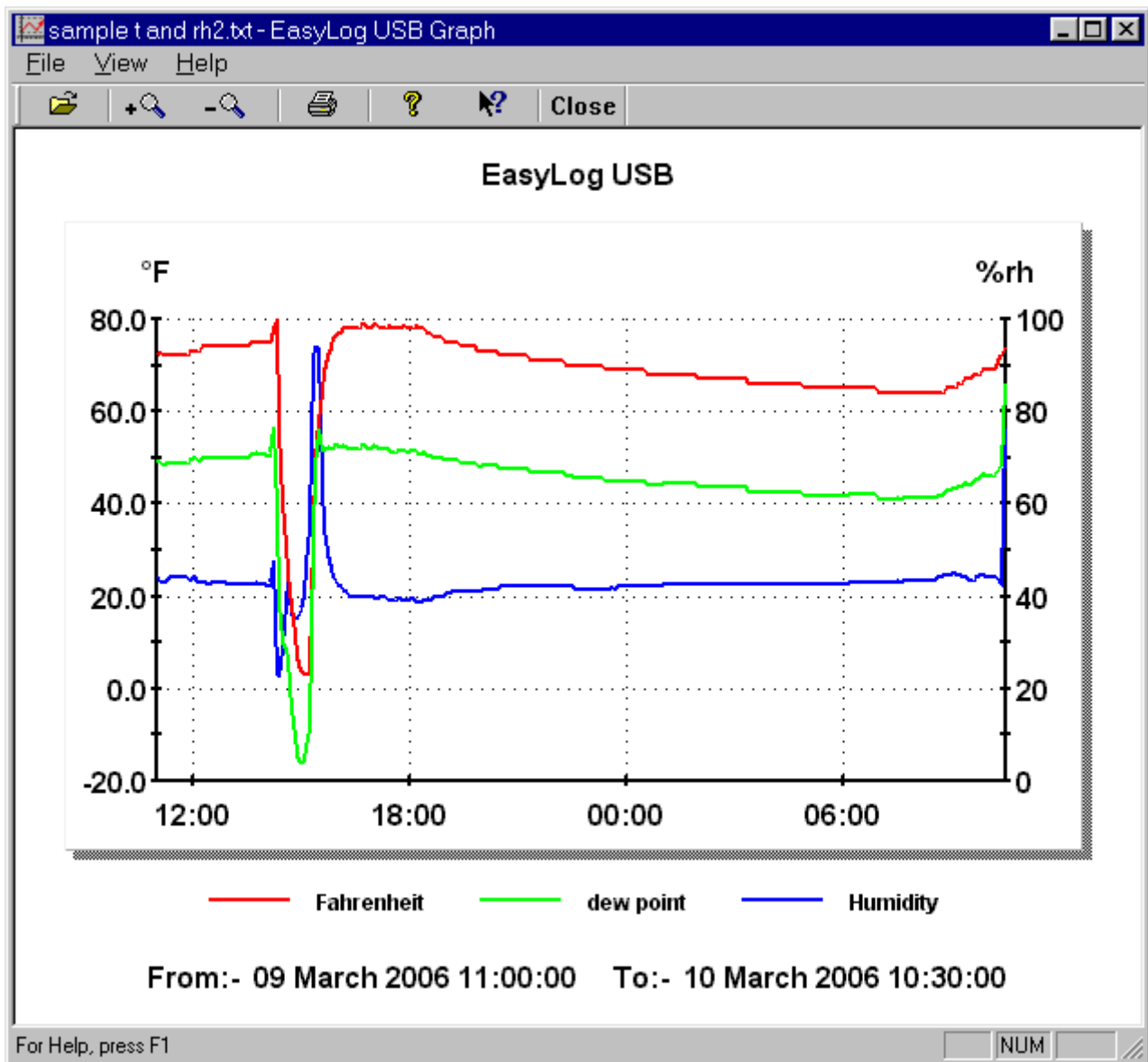
8363 - 6F Center Drive La Mesa, CA 91942 | Tel: 619-698-3300 | Fax: 619-469-8604 | [www.logicbeach.com](http://www.logicbeach.com)



**LOGIC BEACH Inc.**

# EL-USB Software

7. Sample data from above text file graphically represented in the "View previously save data" view. The Plotter also allows the marking of data points, zooming in/out and turning traces on/off as well as gridlines. Since the data file is comma variable delimited the text file is easily imported into popular spreadsheet programs.



**LOGIC BEACH INCORPORATED**

8363 - 6F Center Drive La Mesa, CA 91942 | Tel: 619-698-3300 | Fax: 619-469-8604 | [www.logicbeach.com](http://www.logicbeach.com)