



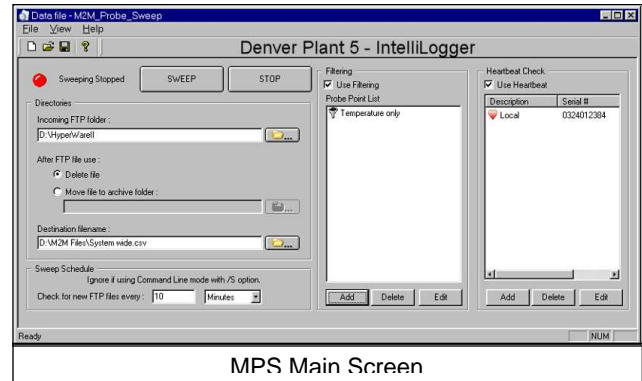
LOGIC BEACH Inc.

IntelliLogger[®] M2M Probe Sweep

MPS Probe Point File Integration Program

Features

- Creates a single archive data from Probe Point values transferred to an FTP server
- Accommodates data files from multiple loggers
- Single file allows for easy data analysis, enterprise wide data base usage, Web presentation of data
- Two methods for activation: Continuous Run or Event Initiated
- Data Filtering selection for precise control over data archived
- Heartbeat feature for proof of operation



OVERVIEW

M2M Probe Sweep (MPS) is a Windows application which generates a single archive data file from FTP files originating from one or more remote Logic Beach IntelliLogger™ data logging systems. The resulting archive 'Destination File' is of CSV format and can be accessed using Excel or more powerful database applications for statistical data collection, remote equipment performance monitoring, custody transfer and other long term data collection needs.

In typical operation, one or more IntelliLoggers will periodically FTP the most recent Probe Point values to a PC running an FTP Server. These FTP files will be received by the FTP server and saved to the PC disk. M2M Probe Sweep extracts the user defined data from the recently received file(s) and appends it to a continually growing CSV "Destination File".

One or more remotely located IntelliLoggers run autonomously, executing a Program Net that includes a time based or event triggered FTP of the most recent Probe Points values to a PC running an FTP Server.

If a new file(s) is detected, MPS will open the FTP file and extract the data matching the M2M Probe Sweep 'Filtering' criteria which specifies the desired Probe Point data to extract and archive. The extracted data will then be appended to a new row of the Destination CSV file and the Destination file will be closed/saved. After successfully appending the data to the destination file, M2M Probe Sweep will either delete the FTP file or move it to an FTP Archive folder so only unprocessed files remain in the Incoming FTP Data folder. Any remaining files will then be similarly processed, oldest file first. M2M Probe Sweep operation continues in concert with the FTP Server indefinitely or until 'Sweeping' is stopped by user intervention.

MPS is an ideal way to collect data from a multitude of IntelliLoggers and consolidate that data into a single archive data file, which may be used for Enterprise-wide WebPages, alarming and on-going data archiving.

070711M

LOGIC BEACH INCORPORATED

8363 - 6F Center Drive La Mesa, CA 91942

Tel: 619-698-3300

Fax: 619-469-8604

www.logicbeach.com