



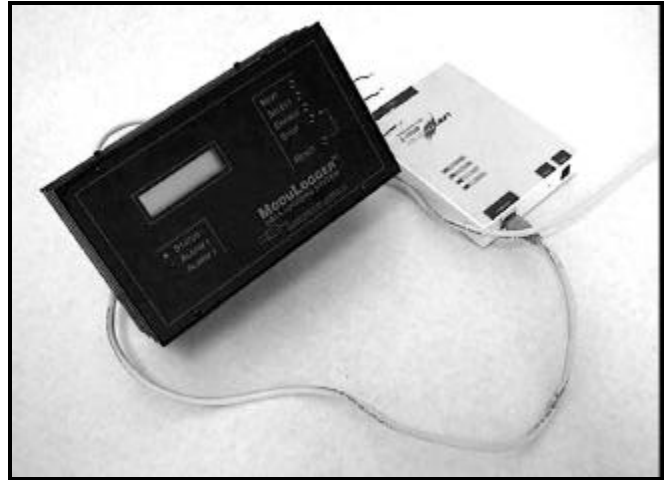
LOGIC BEACH Inc.

Ethernet Connected Dataloggers

DATALOGGING ETHERNET CONNECTIVITY SYSTEM

Features

- Simple hardware configuration and connection to existing Ethernet based networks.
- Compatibility with ModuLogger™ and HyperLogger™ data logger families.
- Full command set within HyperWare™ is implemented transparently and simply... just like other serial communication modes.
- HyperWare Automation Program (HAP) can automatically poll a mix of loggers connected via Ethernet, modem, RS-232, etc.
- Allows unlimited serial data distance runs using standard Ethernet drivers and hubs



OVERVIEW

Standard TCP/IP Ethernet connectivity is now featured in the current offering of serial communication modes for interrogation and programming of Logic Beach data logging instrument families. With a simple installation of the Ethernet Adapter hardware and the new HyperWare 4.1 (or HAP 1.2) software, loggers can now be addressed as a node on an existing LAN or WAN.

With Ethernet connectivity, loggers can be located at remote Ethernet nodes throughout a production facility, in the lab, or even at other facilities and communication can be handled from any PC on the network using the standard installed HyperWare or HAP (HyperWare Automation Program).

NETWORK IMPLEMENTATION

Ethernet data logging communication is implemented by installation and connection of a serial to Ethernet adapter box which connects from a standard 10Base-T or 100Base-T Ethernet to the standard serial port provided on the HyperLogger™, ModuLogger™, and ModuLogger™ "Mini" portable data logging systems offered by Logic Beach (see separate data sheets on the data logger product offering from Logic Beach).

The Ethernet adapter box is then programmed for a unique TCP/IP address. This address is then entered into the HyperWare and/or HAP serial connection directory and the connection is ready.

Ethernet adapter boxes are available with 1 to 16 serial ports per box allowing for up to 16 loggers to be on-line at a single TCP/IP address. An unlimited number of loggers can be configured on a network.

HYPERWARE™ IMPLEMENTATION

HyperWare™ is the standard software application used in conjunction with the Logic Beach portable and remote site data logging instruments. HyperWare provides serial communication with the loggers, programming of the logger, real-time trending, data plotting and data post-processing (see separate data sheet).

Establishing a connection with an Ethernet connected logger is simply a matter of opening the *Serial Communication Dialog* within HyperWare then adding a Connection Name and TCP/IP address for the Ethernet connected logger. When *Connect* is selected, a transparent connection is established providing the same serial connectivity offered by other standard serial connection means (modem, RS-232, cell phone, RF link, etc.).

HAP IMPLEMENTATION

HyperWare™ Automation Program (HAP) is a stand-alone application that simply automates interrogation functions performed during the regular use of field located data loggers. HAP can be configured to automatically call loggers then perform data downloads, memory clears, downloaded data file conversion, posting of Alarm messages, and even the generation of User customized reports through Windows™ automation to Excel. (See separate HAP data sheet).

HAP now supports interrogation of Ethernet connected loggers. HAP can interrogate a full mix of logger models at various sites via modem, RS-232, cell phone and Ethernet.

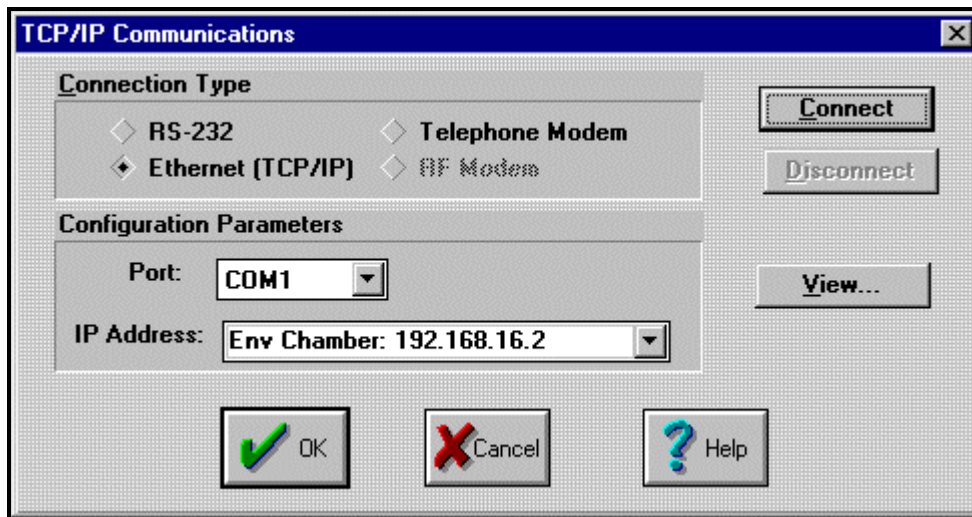


Ethernet Connected Dataloggers

LOGIC BEACH Inc.

Configuration of a Ethernet connected logger is done similarly to any of the other type of serial connections. When building a HAP Site File for the Ethernet connected logger, an IP address and

Name is simply assigned within the HAP Site Communication window.



Simple Ethernet Configuration within HyperWare™

SYSTEM SPECS

Data Logger Compatibility: Logic Beach HyperLogger™, ModuLogger™, or ModuLogger™ "Mini" running Firmware Version 4.x or later.

Network Compatibility: Ethernet version 2, 10/100Base-T. System uses TCP/IP addressing. Windows 95, 98 and NT.

Data Logger Software: HyperWare™ 4.1 or later, HAP 1.2 or later.

COMPONENT PRICING

To order... specify a Serial Adapter Box (with desired number of logger connection ports) and a Serial Cable Adapter Kit which provides the cabling and adapter necessary to connect between the logger serial port and the Serial Adapter Box port.

Ethernet to Serial Adapter Box Pricing: Each Adapter Box is at a single TCP/IP address however, one or multiple loggers can be connected to single or multi-port Adapter Boxes.

LBI-MSS100 (1 logger port, 10/100 BaseT)	\$499
LBI-ETS4P (4 logger ports, 10BaseT)	\$1195
LBI-ETS8P (8 logger ports, 10BaseT)	\$1495
LBI-ETS16P (16 logger ports, 10BaseT)	\$1895
LBI-ETS16PR (16 logger ports, 10 / 100 MHz standard / rack-mount of system)	\$2195

Serial Cable / Adapters Kit: Required for connecting logger serial port to Serial Adapter Box port. Contains one CAR-4 cable and RJDB-25H adapter.

Longer serial cables can be provided by Logic Beach allowing loggers to be located up to 50' from the Adapter Box port (depending on electrical noise in the logger / cable path environment).

SCAK-1	\$36
SCAK-1-custom length (plus 0.50 per foot additional cable length)	\$36

Logger / HyperWare Upgrade to 4.0: \$180
(includes HyperWare™ and Firmware upgrade, manual, etc.)

LOGIC BEACH INCORPORATED

8363 - 6F Center Drive La Mesa, CA 91942

Tel: 619-698-3300

Fax: 619-469-8604

www.logicbeach.com